

# GLOBE TYPE CONTROL VALVES SINGLE

## 3-WAY DIVERTING TYPE TOP AND SKIRT GUIDED

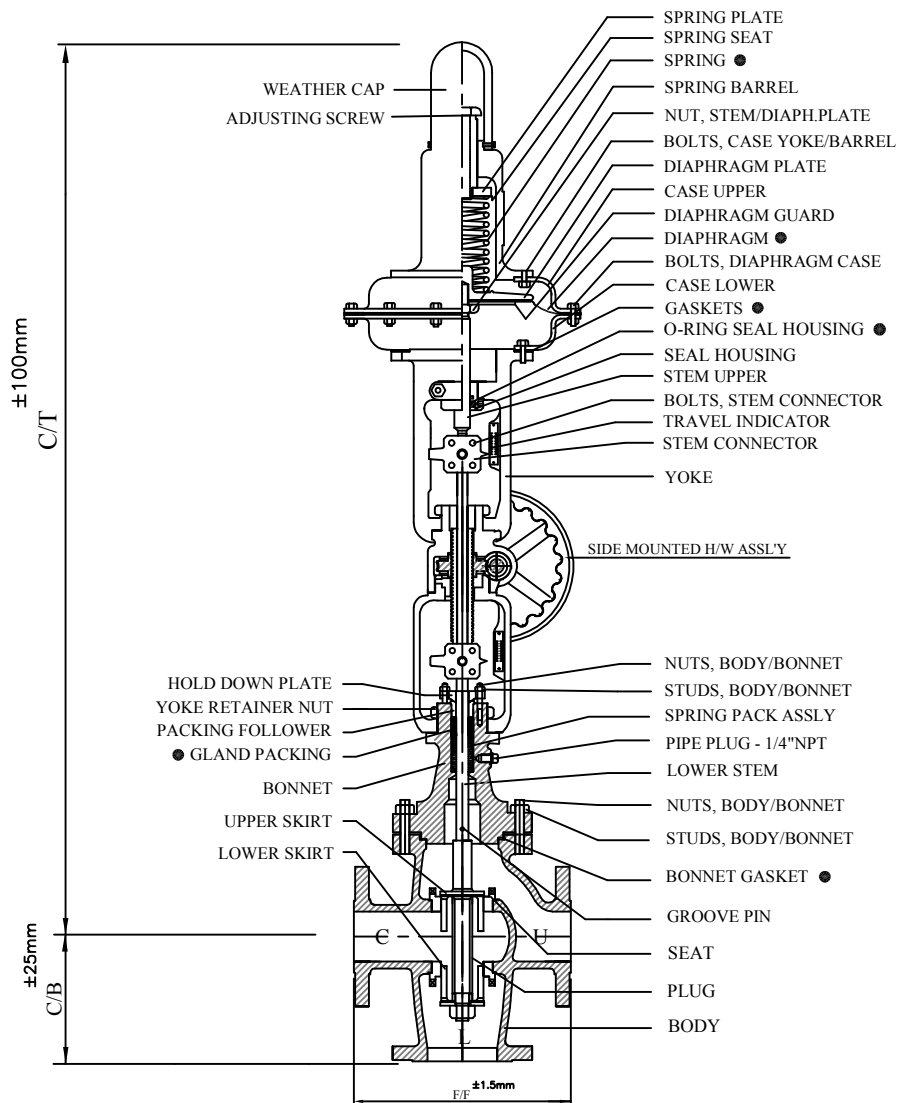
### TECHNICAL SPECIFICATION :

The Model 715 three - way valves are used primarily for diverting or splitting the flow of a fluid medium. medium enters valve body through the port between the two seat rings and diverted through either the opposite or bottom port. flow can be proportioned through both upper and lower seat rings by positioning the inner valve at intermediate points between both seats.

Size Range : 1" (25mm) to 6" (150mm)

Rating :150 , 300 & 600 Class.

MODEL NØ:15



VALVE SIZE - INCH	1"	1-1/2"	2"	3"	4"	6"
VALVE SIZE - mm	25	40	50	80	100	150
F/F 150 ANSI	184	222	254	298	352	450
C/T	880	895	1040	1240	1350	1600
C/B	100	111	127	157	176	225

AIR TO - UPPER PORT - OPEN & LOWER PORT (DIVERTING PORT) CLOSED  
 AIR FAIL - UPPER PORT - CLOSE & LOWER PORT (DIVERTING PORT) OPEN



### FLOW-TEK VALVES & CONTROLS INC

PLOT NO: 172-173, ROAD NO. 4, G.I.D.C.,  
 KATHWADA, AHMEDABAD - 382430  
 (M) : 09824080899, 09824539702  
 PHONE : (079) 22900220, 22900219  
 E-MAIL : info@flowagevalves.com, hemal21386@gmail.com  
 url : www.delugecontrolvalve.com, www.flowagevalves.com  
 AN ISO 9001:2008 CERTIFIED COMPANY