

GLOBE TYPE CONTROL VALVES SINGLE

3-WAY DIVERTING TYPE TOP AND SKIRT GUIDED

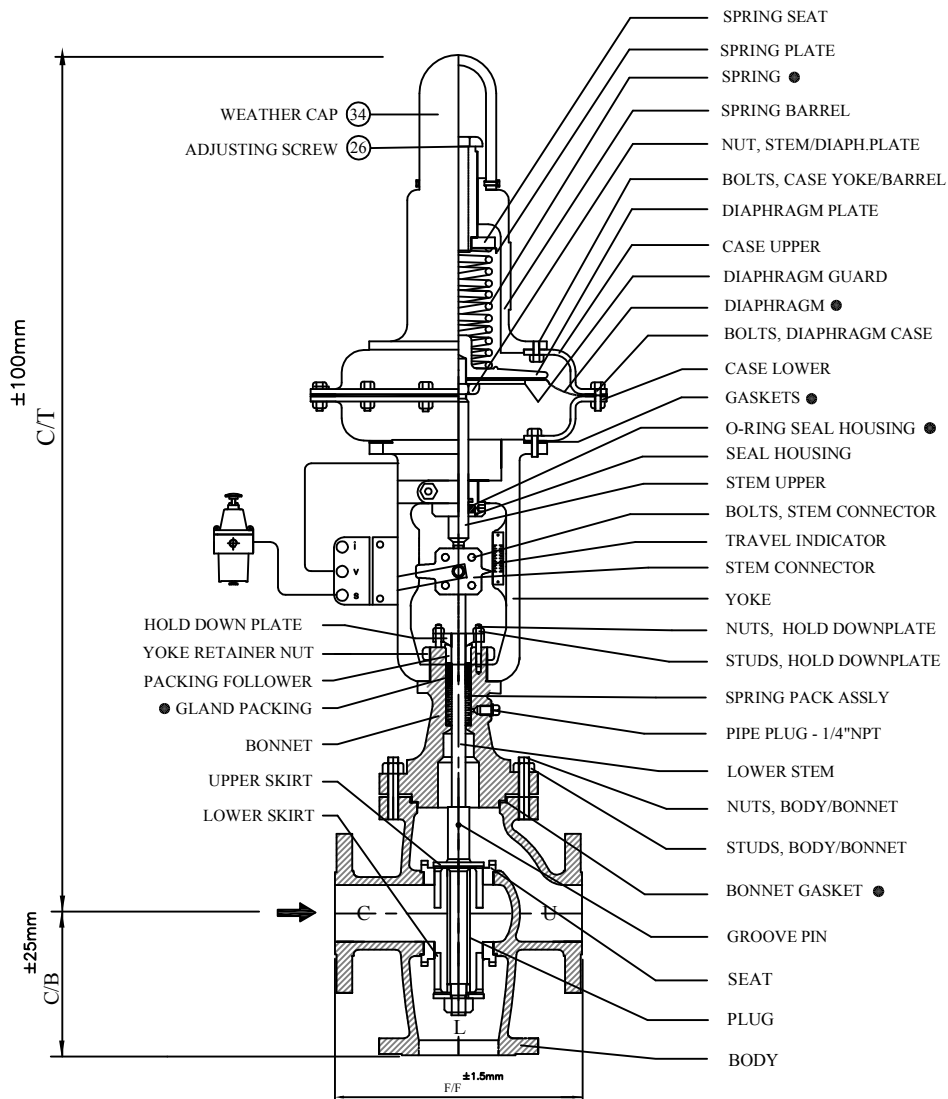
TECHNICAL SPECIFICATION :

The Model 715 three - way valves are used primarily for diverting or splitting the flow of a fluid medium. medium enters valve body through the port between the two seat rings and diverted through either the opposite or bottom port. flow can be proportioned through both upper and lower seat rings by positioning the inner valve at intermediate points between both seats.

Size Range : 1" (25mm) to 6" (150mm)

Rating :150 , 300 & 600 Class.

MODEL NØ715



VALVE SIZE - INCH	1"	1-1/2"	2"	2-1/2"	3"	4"	6"	8"
VALVE SIZE - mm	25	40	50	65	80	100	150	200
F/F 150 ANSI	184	222	254	276	298	352	450	543
C/T	700	732	750	875	875	1000	1150	1700
C/B	100	111	127	138	157	176	225	271.5

AIR TO - UPPER PORT - OPEN & LOWER PORT (DIVERTING PORT) CLOSED
 AIR FAIL - UPPER PORT - CLOSE & LOWER PORT (DIVERTING PORT) OPEN



FLOW-TEK VALVES & CONTROLS INC

PLOT NO: 172-173, ROAD NO. 4, G.I.D.C.,
 KATHWADA, AHMEDABAD - 382430
 (M) : 09824080899, 09824539702
 PHONE : (079) 22900220, 22900219
 E-MAIL : info@flowagevalves.com, hemal21386@gmail.com
 url : www.delugecontrolvalve.com, www.flowagevalves.com
 AN ISO 9001:2008 CERTIFIED COMPANY